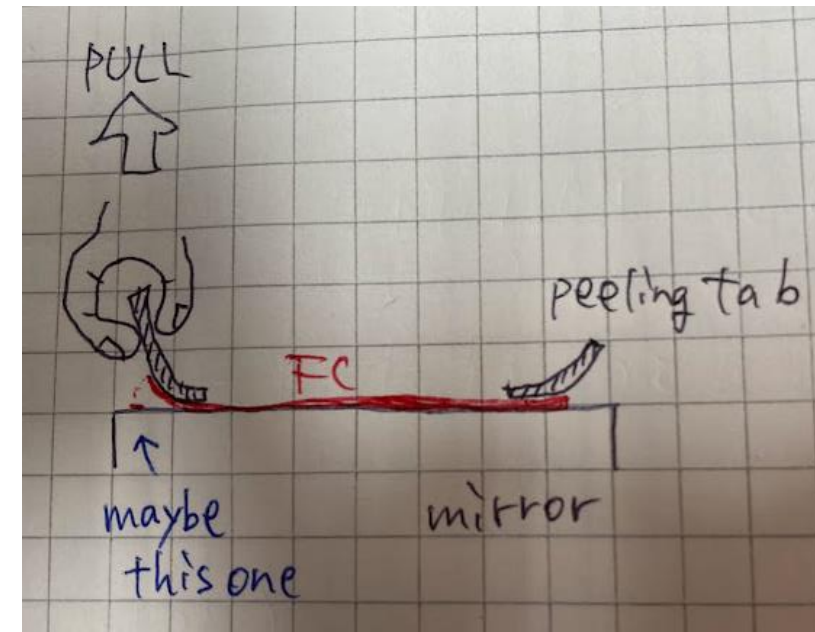
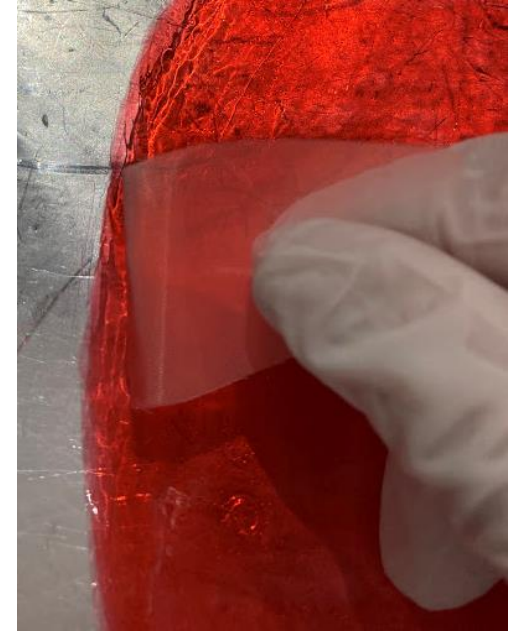
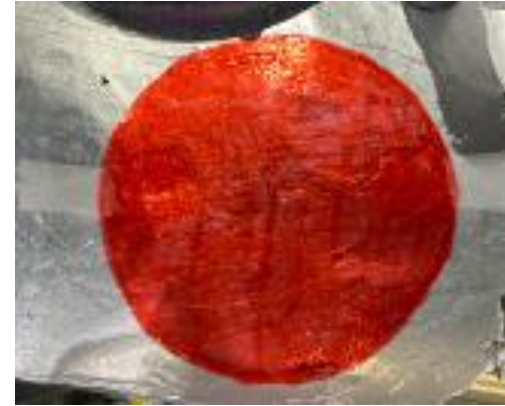
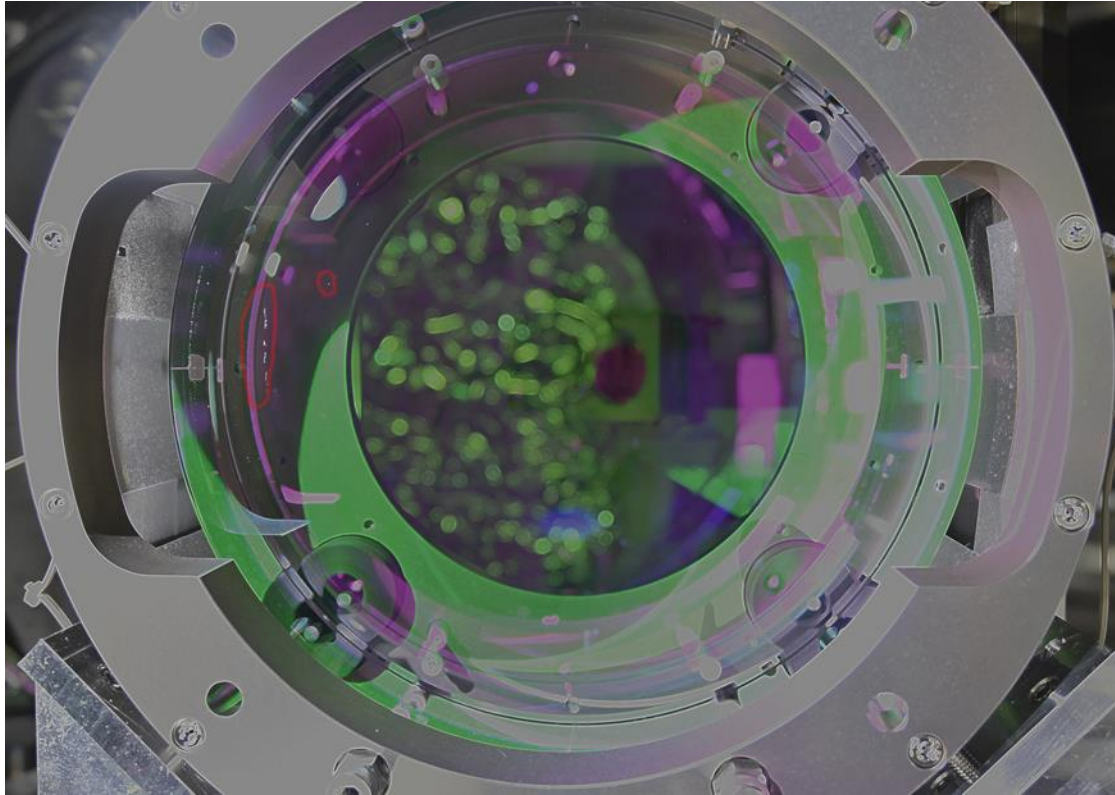


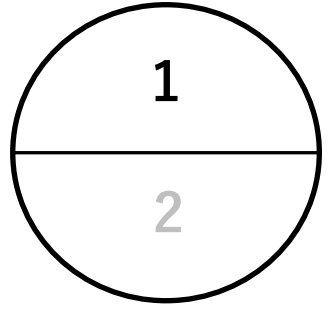
Mirror Cleaning of SR2

In visual check, we could find FC residue and one spot on its left side.

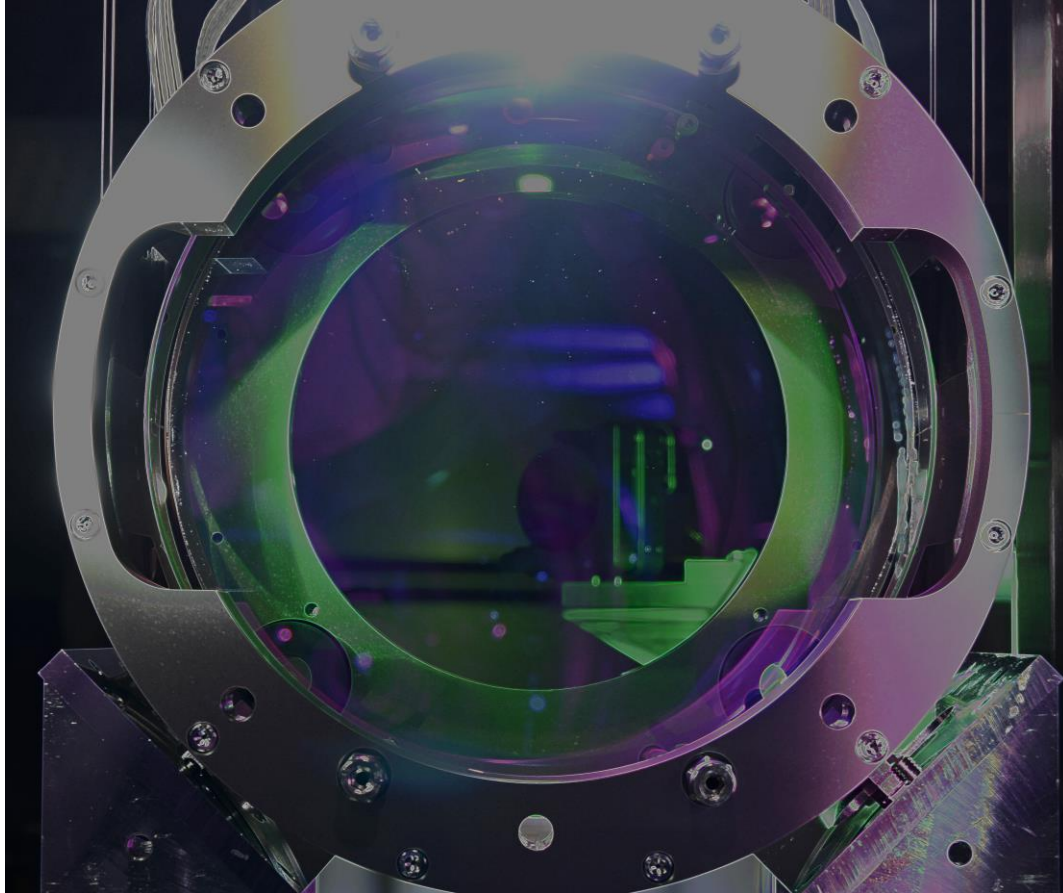


Mirror Cleaning of SR2

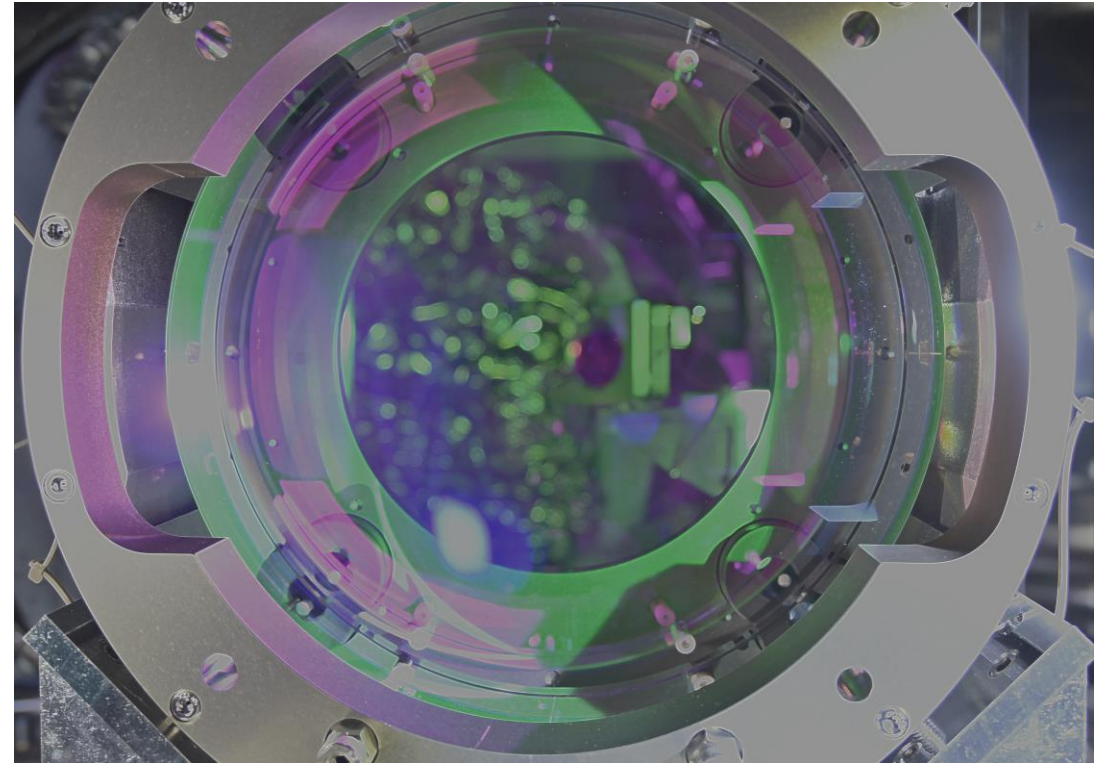
1. Detail [Upper side of HR]



Before(2021.12.13)



After

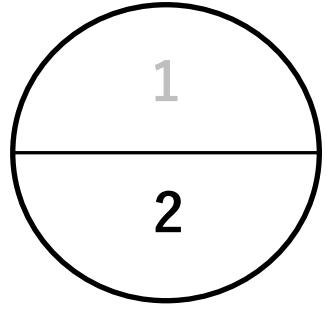


Top area, including center area has a lot of dust.

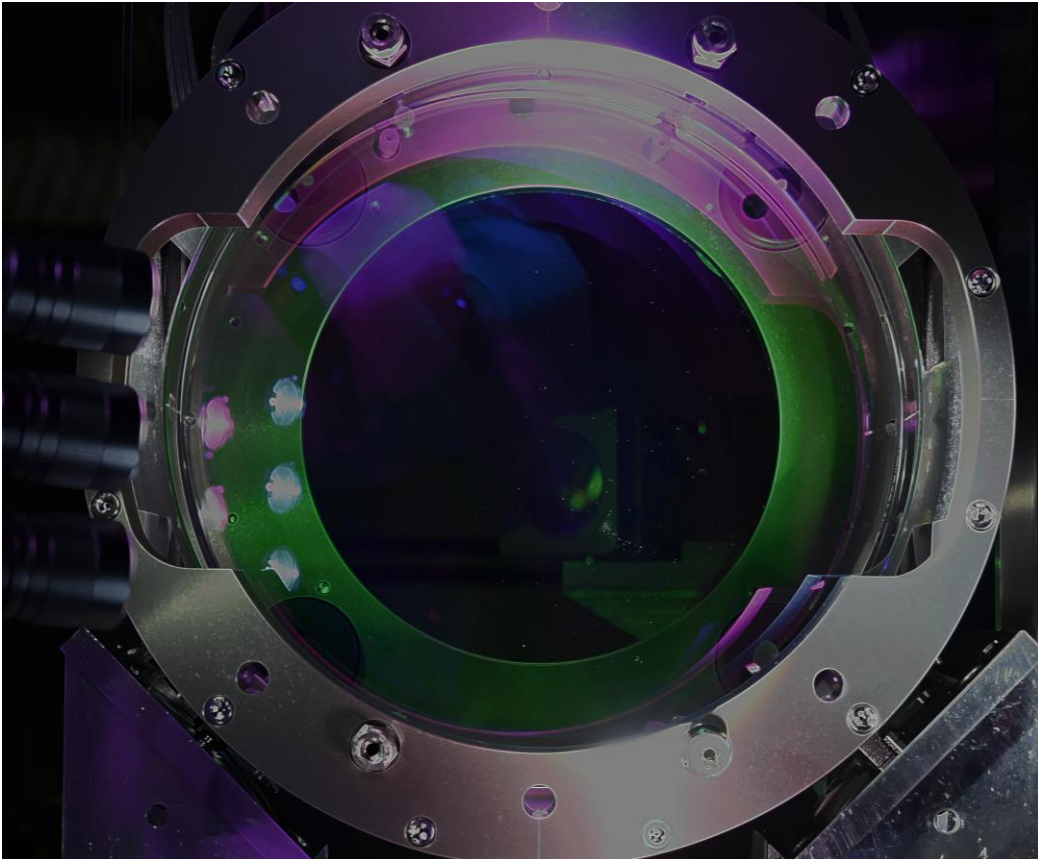
There is fine dust around the upper right .

Mirror Cleaning of SR2

2. Detail [Lower side of HR]



Before(2021.12.13)



Down right area has a lot of dust.

After



The number has decreased but there is still dust.